

i-Key 2032 SafeNet Authentication Client 8.0 (BOCHK/Chiyu)

軟件安裝手冊

<p>作業系統需求：</p> <p>Windows XP</p> <p>Windows Vista</p> <p>Windows 7</p>	<p><u>目錄</u></p> <ol style="list-style-type: none">1. 軟件安裝<ol style="list-style-type: none">1.1. 光碟安裝 或1.2. 網上安裝2. 更改 i-Key 密碼3. 檢視數位證書內容
--	--

Digi-Sign 客戶服務熱線 : (852) 2917 8833

1. 軟件安裝

用戶必須安裝 iKey 軟件才能使用

注意：請以 Windows 管理員身份登錄 Windows 7, Vista or XP，以便正常安裝軟件。如要知道如何以管理員身份登錄，請聯絡你的網絡管理員。

安裝軟件可選擇從光碟安裝(1.1) 或 經網上下載(1.2)

1.1 光碟安裝

1. 關閉所有應用程式。
2. 卸載所有舊版本(如適用)。
3. 將光碟放入光碟機，瀏覽光碟，執行安裝程式—— 請選擇適合的版本。

SafeNet AuthenticationClient-x32-8.00.msi (適合 32 bit Windows)

or

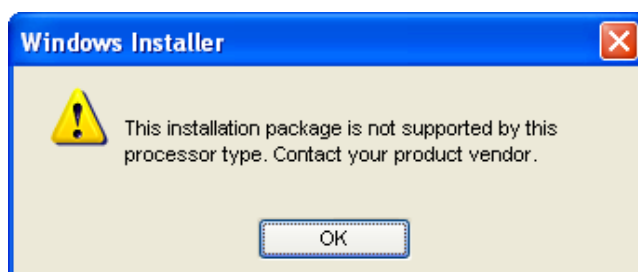
SafeNet AuthenticationClient-x64-8.00.msi (適合 64 bit Windows)

(安裝需數分鐘，請耐心等待)

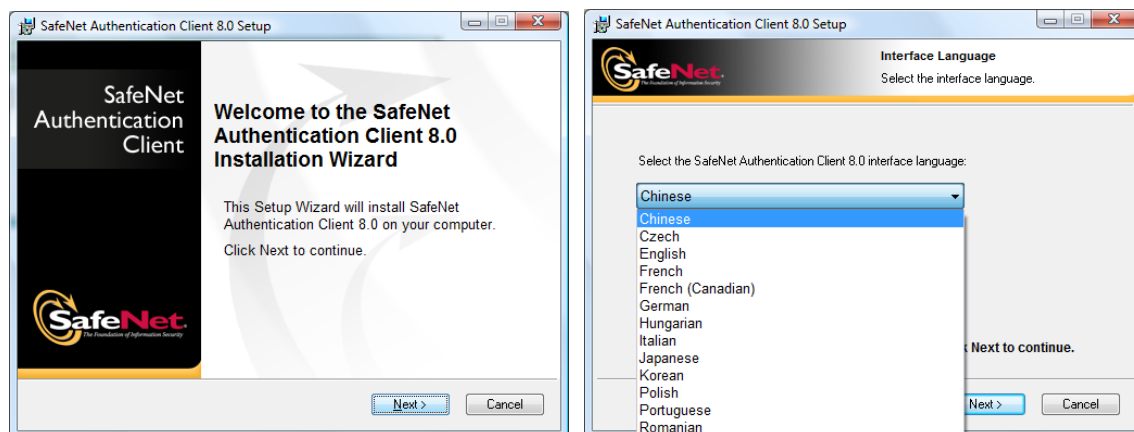
提示訊息：

如選擇不適合的安裝版本，提示訊息將會顯示。

請從新選擇合適的版本安裝。



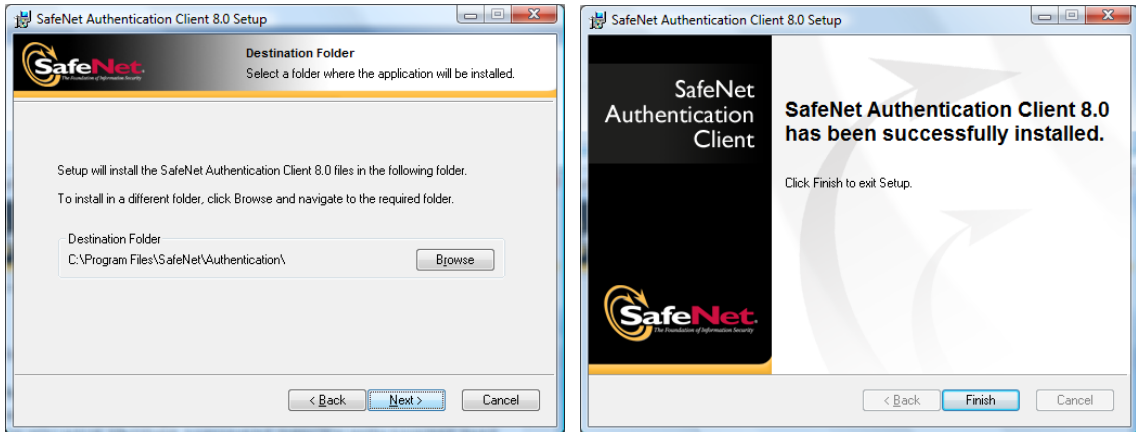
4. 單擊 **Next (下一步)**，然後選擇介面語言 **Chinese (中文)**。



5. 選擇 “I Accept the license agreement”(接受條款)，然後選擇 **Next (下一步)** 進行安裝。

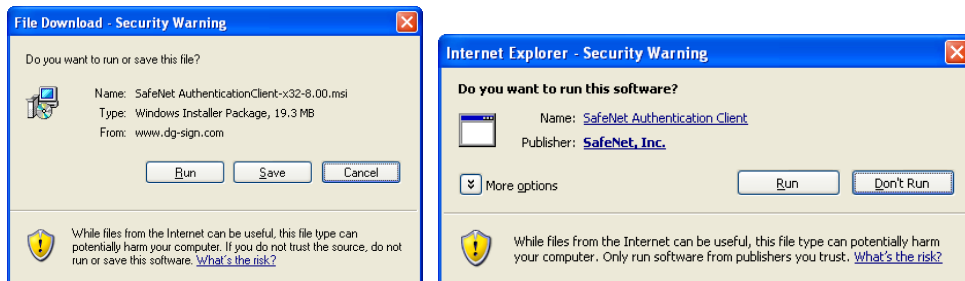


6. 單擊 **Next (下一步)**，然後選擇 **Finish (完成)**，重新啟動電腦完成安裝過程。

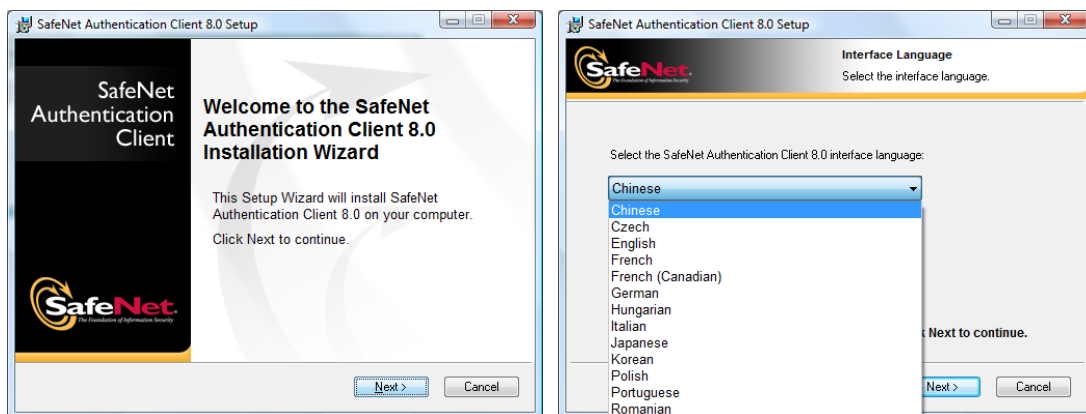


1.2 網上安裝

1. 瀏覽網址 http://www.dg-sign.com/chi/download_ikeeyvm.htm
2. 單擊 [按此](#) 下載軟件。
3. 單擊 **執行(R) / (Run)** 開始下載，然後選擇 **執行(R) / (Run)** 進行安裝。



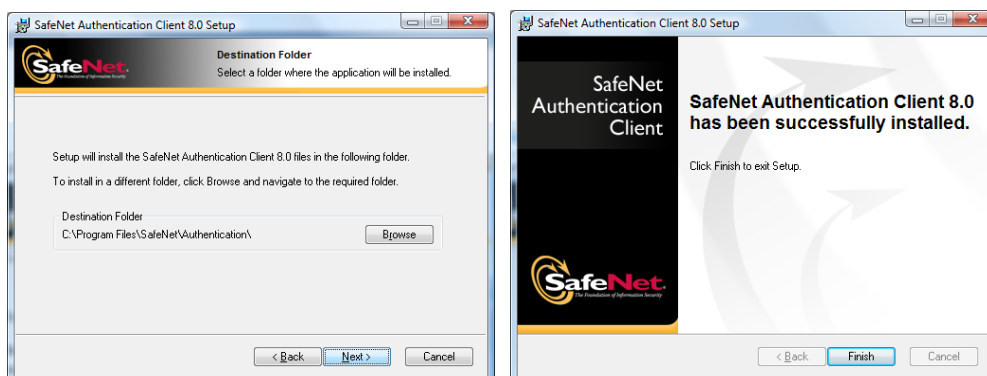
4. 單擊 **Next (下一步)**，然後選擇介面語言 **Chinese (中文)**。



5. 選擇 **“I Accept the license agreement” (接受條款)**，然後選擇 **Next (下一步)** 進行安裝。



6. 單擊 **Next (下一步)**，然後選擇 **Finish (完成)**，重新啟動電腦完成安裝過程。



2. 更改 i-Key 密碼 (選擇性)

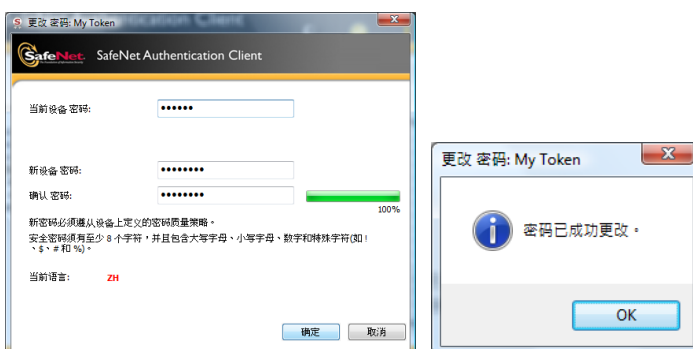
1. 把 i-Key 插入電腦中。
2. 選擇(開始)功能表，選擇 程式集 > **SafeNet** > **SafeNet Authentication Client** > **SafeNet Authentication Client Tools**，單擊 **簡單視圖** 按鈕 。



3. 右鍵單擊已插入i-Key，然後從快顯功能表中選擇 **更改密碼**。



4. 顯示i-Key密碼更改視窗。



- a) 在**當前設備密碼** (舊密碼區)，輸入舊(當前)密碼。如初次使用，請輸入新密碼封條內之密碼。
- b) 在 **新設備密碼** (新密碼區)，輸入新密碼。
- c) 在 **確認密碼** (重新輸入新密碼區)，再次輸入新密碼進行確認。
- d) 選擇 **確認** 進行密碼更新。

注意:

- 如密碼輸入錯誤超過**10**次，**i-Key**將被鎖定。
- 密碼最小長度為 **8** 個英數組合字元。

3. 檢視數位證書內容

1. 選擇(開始)功能表，選擇 程式集 > SafeNet > SafeNet Authentication Client > SafeNet Authentication Client Tools，單擊 簡單視圖 按鈕 。



2. 選擇證書，檢視數位證書內容。



i-Key 2032 SafeNet Authentication Client 8.0 (BOCHK/Chiyu)

Installation Manual

Operating System Requirement: Windows XP Windows Vista Windows 7	<u>Content</u> 1. Install the software 1.1. Install from CD-Rom or, 1.2. Install from web site 2. Change i-Key PIN 3. View the Digital Certificate
--	--

Digi-Sign Customer Service Hotline : (852) 2917 8833

1. Install the software

You **MUST** install the software in order to use the iKey.

Note: You should logon with administrator privileges to Windows 7, Vista or XP in order to install the software properly. If you have no administrator privileges, please contact your network administrator for details.

You may install the software by CD-Rom (1.1) or from web site (1.2).

1.1 Install from CD-Rom

1. Close all programs and applications.
2. Uninstall all previous version of the i-Key software (if applicable).
3. Insert the software CD-Rom to your computer's CD-Rom drive. You can browse the CD-Rom to start the installation program. Select the appropriate software version.

SafeNet AuthenticationClient-x32-8.00.msi (For 32 bit Windows)

or

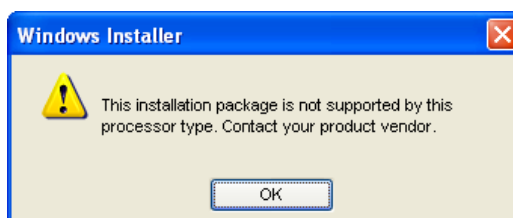
SafeNet AuthenticationClient-x64-8.00.msi (For 64 bit Windows)

(It will take few minutes to complete the installation process)

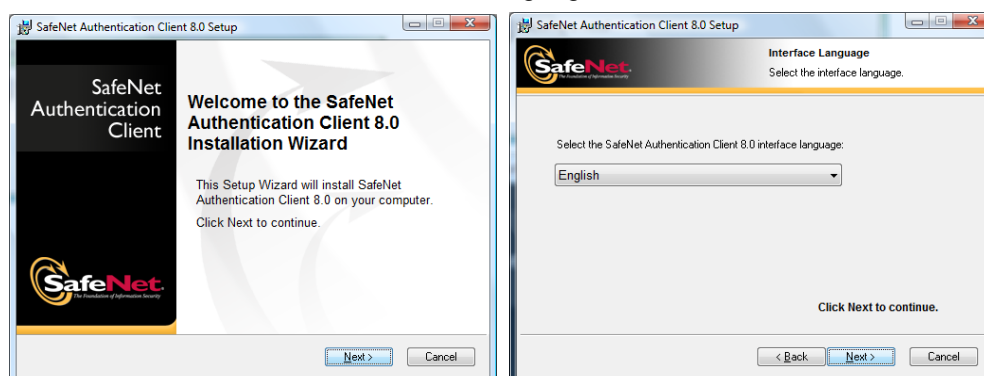
Warning Message:

If you select the incorrect version, the error message will be occurred.

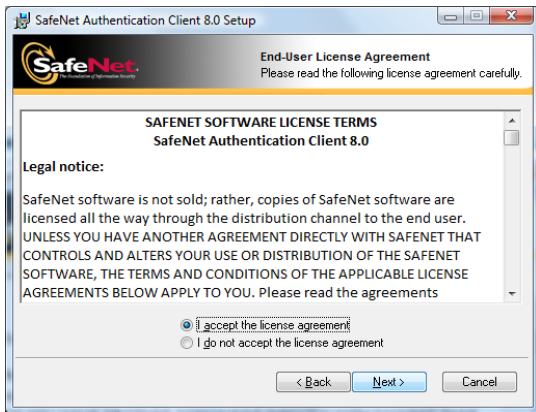
Please select the appropriate version again.



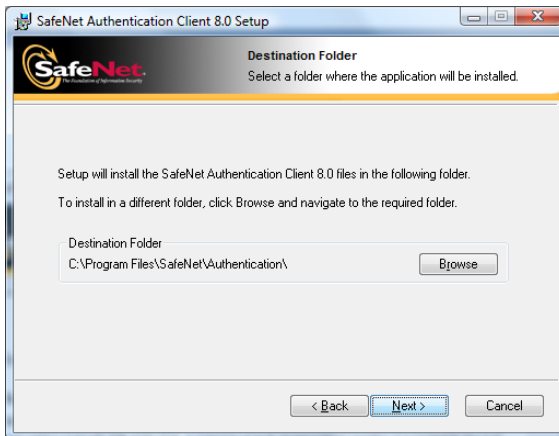
4. Click **Next** and then Select the interface language.



5. Select **“I Accept the license agreement”** and click **Next** to run the installation.

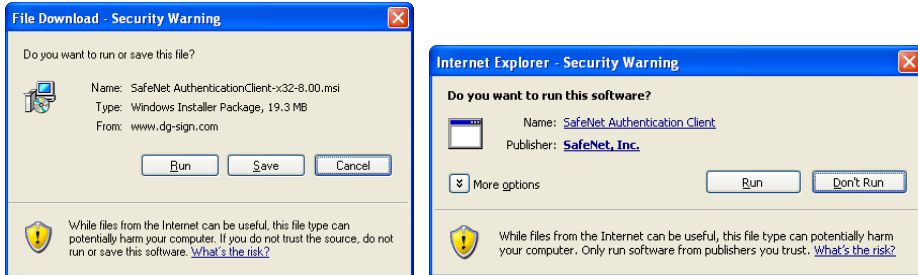


6. Click **Next** to continue the installation, then click **Finish** and you **must** restart your computer to complete the installation

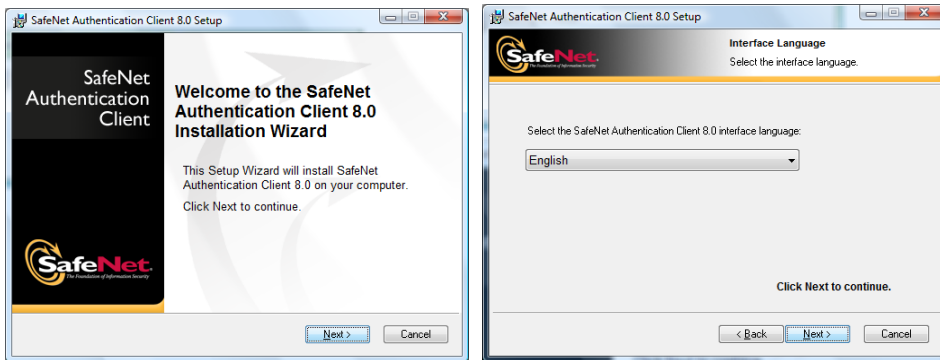


1.2 Install from web site

1. Go to the web site http://www.dg-sign.com/eng/download_ikeyvm.htm
2. Click on **Click here** to download the software.
3. Click **Run** to start the download, then click **Run** to run the installation



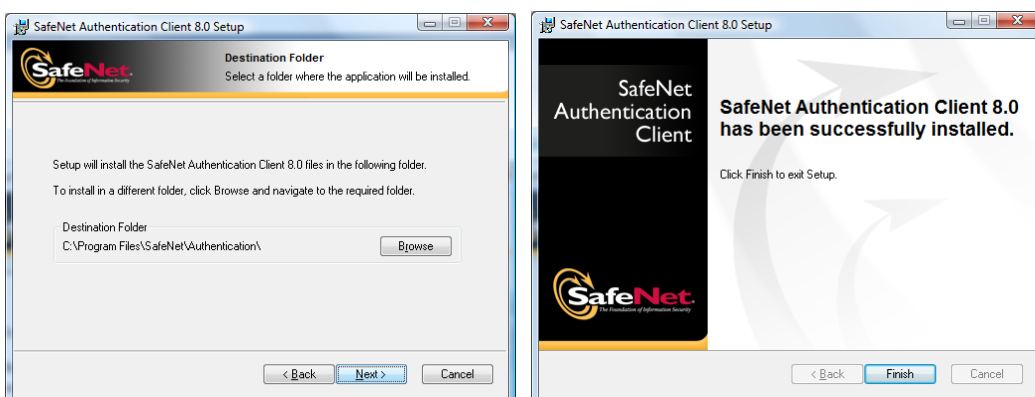
4. Click **Next** and then Select the interface language.




5. Select **"I Accept the license agreement"** and click **Next** to run the installation



6. Click **Next** to continue the installation, then click **Finish** and you **must** restart your computer to complete the installation.

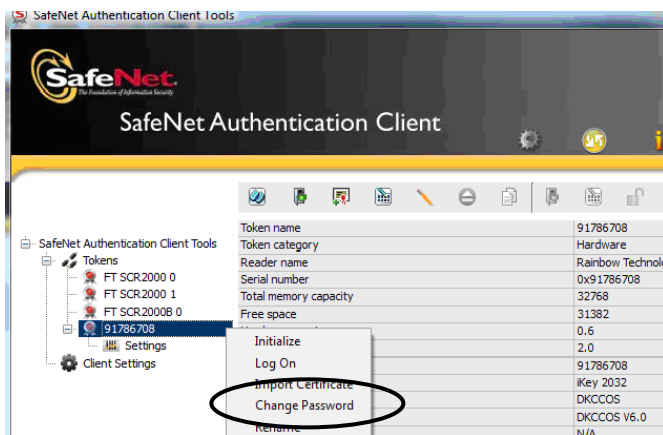


2. Change i-Key PIN (Optional)

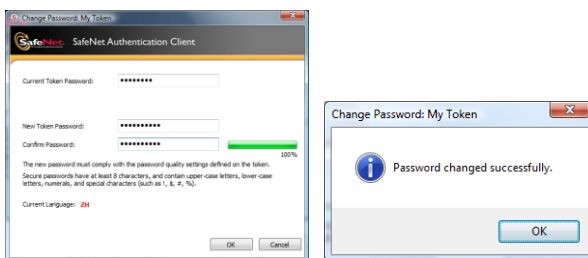
1. Insert the i-Key into the computer
2. From the **Start** menu, select **Programs > SafeNet > SafeNet Authentication Client > SafeNet Authentication Client Tools**. Click the **Advanced View** icon .



3. Right-click on the i-Key you want to change PIN, and then select **Change Password** from the shortcut menu.



4. The Change Password window appears.



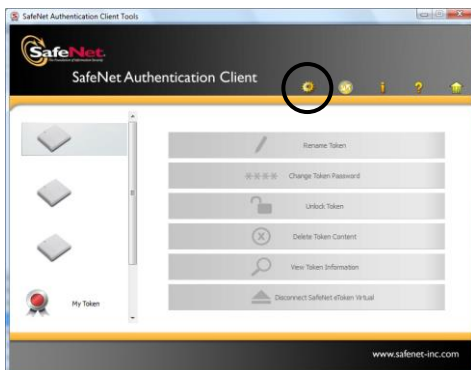
- a) In the **Current Token Password** field, enter your old (current) Password. For the first time login, use the NEW PIN Mailer password.
- b) In the **New Token Password** field, enter your new Password
- c) In the **Confirm Password** field, enter your new Password again for confirmation
- d) Click **OK** to update the change

Note:

- Entering the wrong Password 10 times will block your i-Key.
- The minimum length of Password is 8 alphanumeric characters.

3 View the Digital Certificate

1. From the **Start** menu, select **Programs > SafeNet > SafeNet Authentication Client > SafeNet Authentication Client Tools**. Click the **Advanced View** icon .



2. Select the i-Key slot to view the digital certificate

